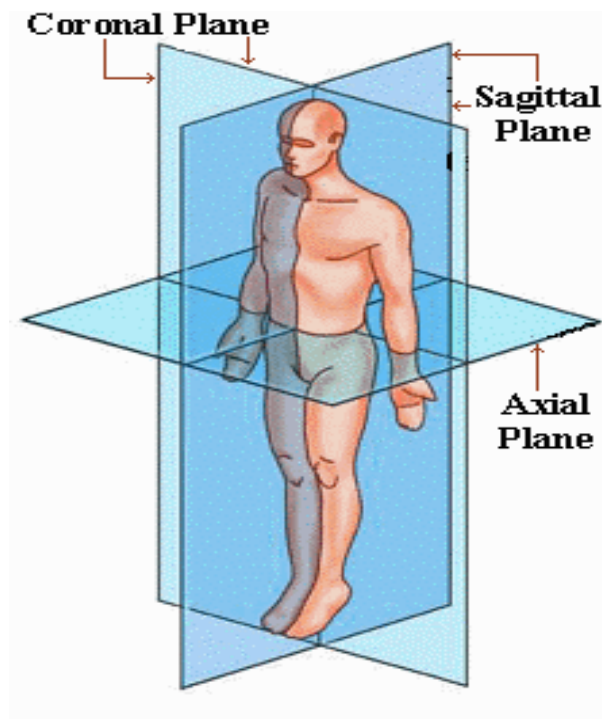


Medical professionals often refer to sections of the body in terms of anatomical planes (flat surfaces). These planes are imaginary lines – vertical or horizontal – drawn through an upright body. The terms are used to describe a specific body part.



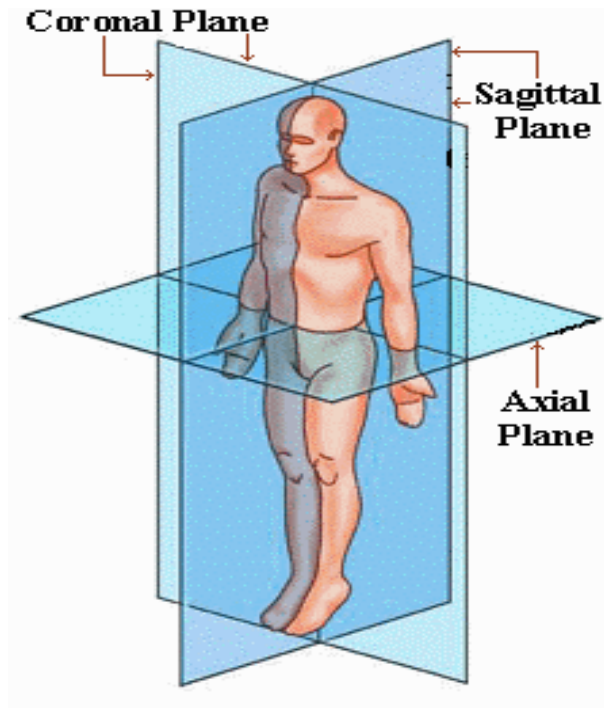
Listed below are general anatomical terms and their meanings.

Anatomical Planes	
Coronal Plane or Frontal Plane	
Sagittal Plane or Lateral Plane	
Axial Plane or Transverse Plane	
Anatomical Terms	Direction
Medial	Toward the midline of the body
Lateral	Away from the midline of the body
Proximal	Toward a reference point (extremity)
Distal	Away from a reference point (extremity)
Inferior	Lower or below
Superior	Upper or above
Cephalad or Cranial	Head
Caudal or Caudad	Tail, tail end
Anterior	Toward the front
Posterior	Toward the back
Dorsal	Posterior
Ventral	Anterior

**Terms in
RED font
will be on
the Test.**



Name:



_____ The plane that separates the body from bottom to top.

_____ The plane that separates the body from left to right.

_____ The plane that separates the body from front to back.

Match the terms to their appropriate definition.

- | | |
|---------------|---|
| ___ Anterior | a. Located towards the front of the body. |
| ___ Superior | b. Located below a reference point of the body. |
| ___ Posterior | c. Located towards the mid line of the body. |
| ___ Medial | d. Located above a reference point of the body. |
| ___ Inferior | e. Located towards the back of the body. |
| ___ Lateral | f. Located towards the outer extremities of the body. |